

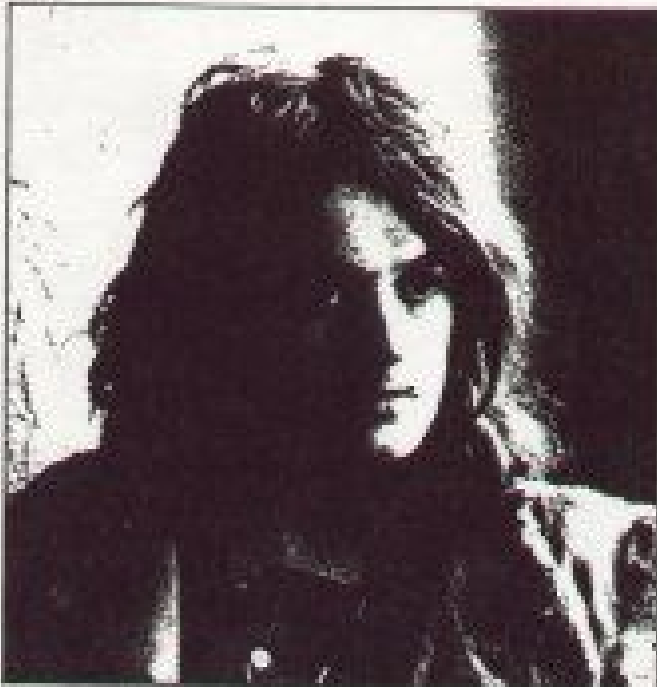


ARE

BILL BRUFORD Drums
TONY KAYE Organ
PETER BANKS Guitar/Vocals
CHRIS SQUIRE Bass/Vocals
JON ANDERSON Lead Singer



CHRIS SQUIRE



JON ANDERSON



PETER BANKS

THE MUSIC THAT WE WILL BE PLAYING THIS EVENING represents a broad cross-section of what the band has been doing since its formation.

The first set, with the exception of a brace of oldies, consists largely of Jon's more recent compositions arranged and played by the band alone.

The use of additional musicians and part-time rhythm shakers in the second set is a simple bid to transmit to you, the audience, something of the enjoyment we derive from playing with them, as we did on some tracks of our forthcoming album, and as we do again this evening.

Finally, thank you for coming.

The taking of photographs in the Auditorium is not permitted.

No smoking in the Auditorium.

Smoking London Council regulations.

It is prohibited to take photographs in the Auditorium and it is prohibited to stand or sit in any of the passages immediately in front of or behind the stage.

It is prohibited to use any of the other passages.

There is a cloak room in the hall, a news stand, 'Whispering' on the radio, measured acoustically 88 decibels (dB(A)) of sound. A single 'concert' might give the same hearing. A loudspeaker placed over the stage might roughly equal to obtaining a 'concert'.

BILL BRADFORD



TONY DAVE





The first YES album is on Atlantic 588 190

The front of the
souvenir programme
is designed by Laurence
Sackman and will be the
cover of the new YES album
called TIME AND A WORD —
available shortly from Atlantic Records

